



STONE & CONCRETE

CONCRETE
PORCELAIN
TILES

The Raw Stone collection comes from the inspiration of the loveliness of hand crafted Concrete Objects.

Natural and a Velvet finish is available in 5 colours.

RAWSTONE

capitol tiles designer studio



Concrete Porcelain Tiles

5

Colours

5

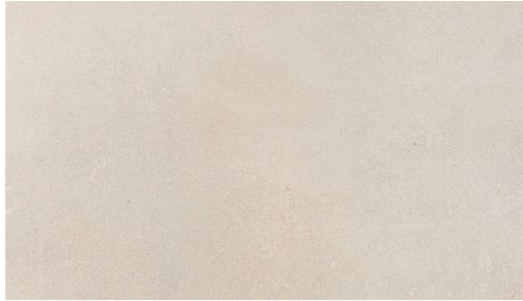
Sizes

2

Finishes

Rawstone

capitol tiles designer studio



* 527



* 528



* 529



* 530



* 531

Velvet finish only available in
75x75 & 75x150

10 x 10 samples are available on request. Actual tile colours may vary from those shown above.

Size (cm)	Thickness (mm)	Finish	Slip rating	Special pieces
30 x 60 60 x 60 75 x 75 37.5 x 75 75 x 150	9.5 10.0 10.0 10.0 10.5	Natural (N)	Din 51130 R 10 PTV > 36	- Mosaics Square Brick Vintage - Battiscopa Skirting
75 x 75 75 x 150	10.0 10.5	Velvet (V)	Din 51130 R9	- Step-tread